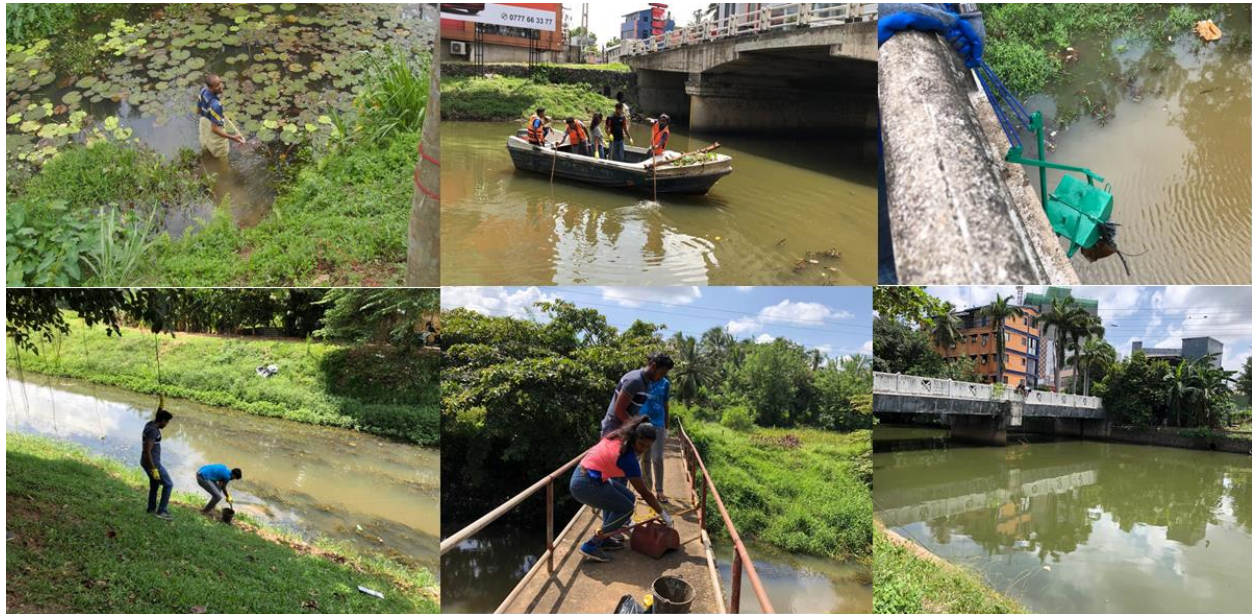
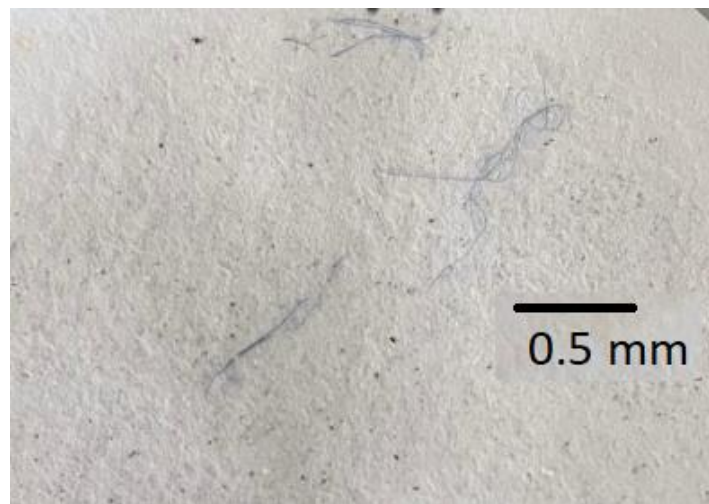


Environmental Pollution Assessment

Key Researcher (s): Prof. Ayantha Gomes, Prof. Shiromi Karunaratne



Sampling of urban and peri-urban canals



Some of the microplastics observed in a water sample from a water body in Colombo

- Different aspects of environmental pollution such as quantification of pollution, effects on ecosystems and human health, and proposal of remedial measures as being researched. In this regard the urban waterways were heavily studied with respect to nutrients, sediment and microplastic pollution, and the impacts of point and non-point sources. Currently special emphasis is given on microplastic pollution where rural waterways also taken into the scope of studies.